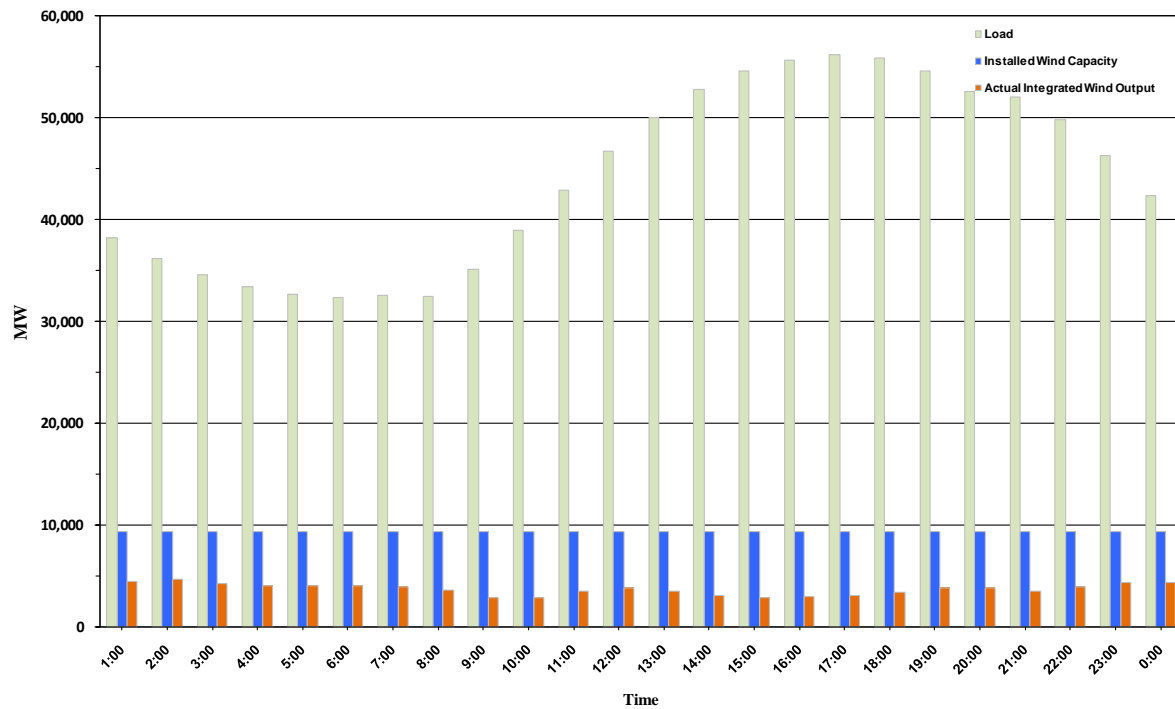




## ERCOT Grid Operations Wind Penetration Report: 08/29/10

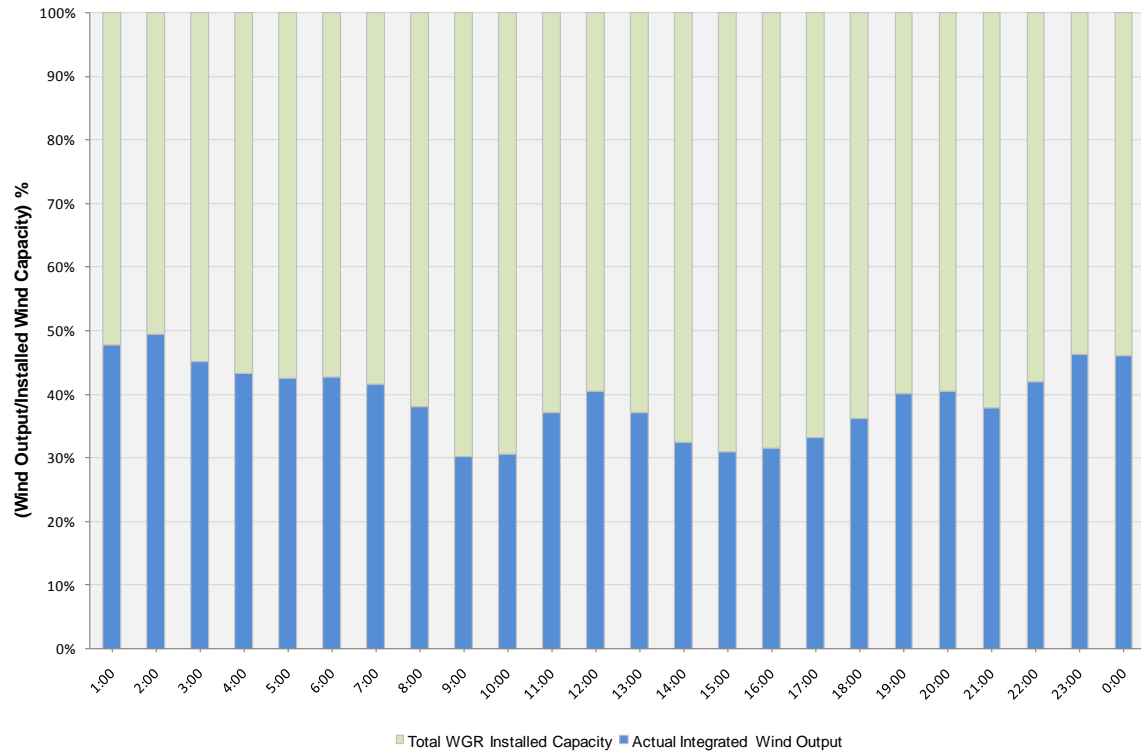
Peak Load	<b>56,152 MW</b>
Load Peak Hour	<b>17</b>
Wind Record 06/12/10	<b>7016 MW</b>
Max Wind value	<b>4769 MW</b>
Wind Peak Hour	<b>01:54:24</b>
Wind Penetration %	<b>13.46</b>

Hourly Average Actual Load vs. Actual Wind Output  
08-29-2010

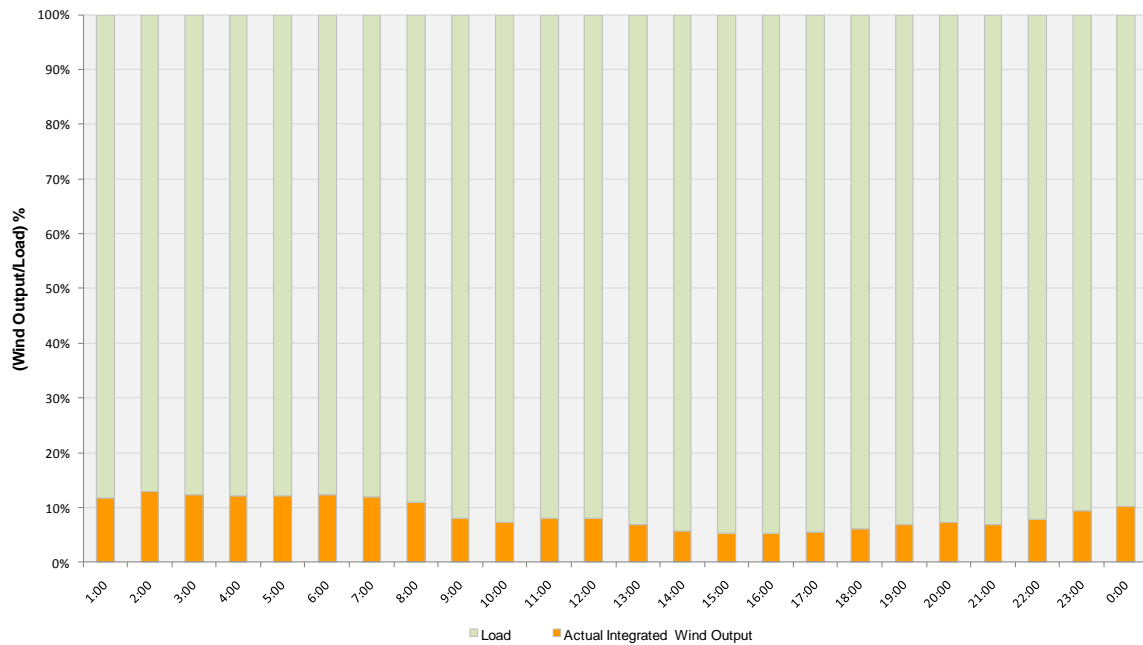




**Actual Wind Output as a Percentage of the Total Installed Wind Capacity**  
**08-29-2010**



**Actual Wind Output as a Percentage of the ERCOT Load**  
**08-29-2010**





ERCOT Load vs. Actual Wind Output 08/22/10 - 08/29/10

